



The Kainake Project

A Community Based Organisation fostering sustainable development in the Autonomous Region of Bougainville

Organizational Vision, Programs and Projects



Photo: The *Pteralopex anceps*, a monkey-faced bat endemic to the Solomon islands archipelago. It is TKP's conservation flagship specie.

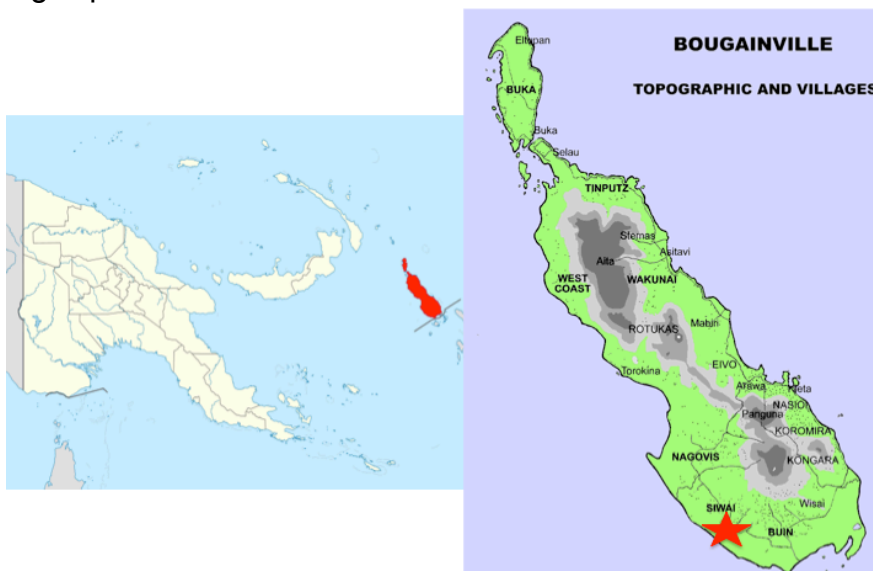
TABLE OF CONTENTS

About Bougainville	3
About Us	4
Mission Statement and Guiding Principles	5
Our Vision.....	5
Our Mission	5
Our Values	5
Our Guiding Principles	5
Alignment with PNG Vision 2050 and StaRS Strategy	6
Sustainable Development Goals	6
Organisational Framework	7
Our Programs	9
1. Society and Security	10
2. Education and Capacity Building	11
3. Environment And Climate Change	12
4. Research, Science and Technology	13
Our Team	14
BOARD OF DIRECTORS	15
Dr Jeffrey Noro (Executive Director and Chairman of Board)	15
Dr David Flannery (Non Executive Director)	15
Mr George Nosuri (Executive Director).....	15
EXECUTIVE MANAGEMENT	16
Mr Junior Novera	16
Dr Simon Kenema	16
Mr Stanley Lothe	16
Mrs Linbert Nosuri	16
Current Projects	17
Partnerships	17
Legal Registration	17

ABOUT BOUGAINVILLE

At ~9000 km², Bougainville Island is the largest island in the Autonomous Region of Bougainville and is home to most of the region's 175 000 people. Bougainville was inhabited by Austronesian people for at least 28 000 years prior to annexation by Germany in 1899. The island was then administered by Australia during World War 1 and later occupied by the Japanese during World War 2. Following the war, Bougainville returned to Australian control until Papua New Guinea (PNG) was granted independence in 1975. Bougainville declared independence from PNG in 1975 and again in 1990, before a decade-long civil war. The civil war began when disgruntled local landowners of the Panguna mine, which was operated by Rio Tinto Zinc, demanded K10 billion in compensation for environmental damages. What began as an environmental dispute later escalated into an independence movement after the PNG Defense Forces sent in by the national government to quell the unrest committed atrocities against the people of Bougainville. The war that followed saw the loss of approximately 20,000 Bougainvillian lives and the dismantling of the civil government, along with its infrastructure and public services. With regional assistance from New Zealand, Australia, Fiji and Vanuatu, a ceasefire was initiated in 1997 and a slow process of recovery began. A series of government reforms followed, namely the Bougainville Interim Governments and the Bougainville Transitional Government. It was during this era that the Constitution of the Autonomous Region of Bougainville (AROB) was drafted. In 2005, the constitution was adopted and AROB was granted autonomous status by the Papua New Guinea National Government.

The Bougainville ecoregion includes rare tropical lowland forest with a high degree of mammal endemism. The highlands include several active and inactive volcanoes. Owing to the civil war, the flora and fauna of Bougainville remains comparatively poorly studied and access to power, telecommunications, healthcare and schooling is poor.



LEFT: Map of PNG with Bougainville Island colored in red. RIGHT: Map of Bougainville. The project site is in Siwai, which is denoted by the red star.

ABOUT US

The Kainake Project Inc. is a sustainable development organization based in the Autonomous Region of Bougainville, Papua New Guinea. It's historical origins date back to 2012 when late Albert Joseph Noro, a former Executive Manager for Siwai district in Bougainville, spearheaded the Chiefs Empowerment Plan to focus on building the capacity of community chiefs in leadership and decision-making processes. It targeted primarily Community Government officials and chairpersons of village authorities. It was based on the premise that tangible development is a product of ethical leadership in leading communities to collectively seek solutions to their societal challenges. In short "community problems needed community solutions."

In 2013, in response to the Chiefs Empowerment Plan, Dr. Jeffrey Noro, a natural products scientist and native Bougainvillean, and Dr. David Flannery, an Australian geobiologist, founded The Kainake Project Inc. The intention for the establishment was to address capacity gaps in education, social security and sustainable management of vulnerable ecosystems specifically in the Kainake community of Siwai district. Even though the organization started as a community project targeting an isolated community, it has evolved over the years with support and assistance from the Papua New Guinea Institute of Biological Research. Our focus is now shifting towards creation of sustainable development strategies and management systems that can potentially be replicated across Bougainville.

TKP's development inspiration and philosophy is centered on the 17 UN Sustainable Development Goals. Drawn from the experiences of the Millennium Development Goals in which PNG failed to implement any of the goals, TKP aspires to achieve SDGs through direct community action and engagement. The core focus of our strategic thinking is on investment in human and knowledge capital so that people can undertake informed transformative action to develop their natural resources and cultural endowments for their community's benefit. We believe that any development must be centered on educating the human mind and empowering communities so they are able to utilize information in making socioeconomic decisions within set ecological realities.

The PNG government's PNG Vision 2050 and StaRS Strategy are two aspirational documents that underpin the country's development goals. However, there have been mammoth challenges in implementation of these government policies at the community level impeding development and improvement in people's quality of life. TKP is ambitious in ensuring that there is cascading logic in its development framework for the translation of government's national development goals into community actions so that sustainable development is achieved in our society.

MISSION STATEMENT AND GUIDING PRINCIPLES

OUR VISION

Creating and sharing knowledge to empower people to preserve and develop their natural and cultural inheritance

OUR MISSION

Stimulate sustainable development and social progress by encouraging and strengthening gender and social inclusivity through capacity building and investment in knowledge generation. And bridging the gap in society needs and challenges through innovative research initiatives that add value to our cultural and natural resources and achieve quality of life.

OUR VALUES

In line with the strategic intent of the PNG Vision 2050, we are committed to the values of:

1. Honesty
2. Integrity
3. Accountability
4. Respect
5. Wisdom
6. Responsibility

OUR GUIDING PRINCIPLES

1. A better future can be built through integral human development.
2. Environmental sustainability leads to a sustainable community.
3. Improvement in education and health equates to improved wellbeing.
4. Gender equity and social inclusion benefit the whole community.
5. Economic growth must be guided by wisdom and the smart utilization of our natural resources.
6. Science and technology are drivers for innovation and can increase the value and sustainability of our resources.
7. We commit to transparency as an organisation and will always respect the goodwill of our funding sources.

ALIGNMENT WITH PNG VISION 2050 AND STARS STRATEGY

Our organization is inspired by the PNG Vision 2050 and its vision for PNG to be a “Smart, Wise, Fair and Happy Society by 2050” and to be among the top 50 countries on Human Development Index by 2050. TKP aspires to contribute and enable the realization of the PNG Vision 2050 for its stakeholders through directed community action.

Hence TKP’s vision, mission and governing principles are aligned with the seven pillars of the PNG Vision 2050 namely; (1) Human Capital Development, Gender, Youth and People Empowerment, (2) Wealth Creation, (3) Institutional Development and Service Delivery, (4) Security and International Relations, (5) Environmental Sustainability and Climate Change, (6) Spiritual, Cultural and Community Development and (7) Strategic Planning, Integration and Control.

The National Strategy for Responsible Sustainable Development (StarS) Strategy is a road map to shift PNG’s socio-economic growth away from the current unsustainable growth strategy towards a responsible and sustainable green growth path that will strengthen PNG’s economic competitiveness while preventing the loss of biodiversity and ecosystem services.

Our organization endeavors to translate these overarching government policies into cascading programs and projects that are implementable in our communities.

SUSTAINABLE DEVELOPMENT GOALS

THE KAINAKE PROJECT will also aim to achieve the following Sustainable Development Goals through its programs;

- SDG 1: Reduce Poverty
- SDG 2: Zero Hunger
- SDG 3: Good Health and Wellbeing
- SDG 4: Quality Education
- SDG 5: Gender Equality
- SDG 6: Clean water and sanitation
- SDG 7: Affordable and Clean Energy
- SDG 8: Decent work and economic growth
- SDG 9: Industry, Innovation and Infrastructure
- SDG 10: Reduce inequalities
- SDG 11: Sustainable communities
- SDG 12: Responsible consumption and production
- SDG 13: Climate Action
- SDG 14: Life below water
- SDG 15: Life on land
- SDG 16: Peace, justice and strengthen institution
- SDG 17: Partnerships for the Goals

ORGANISATIONAL FRAMEWORK

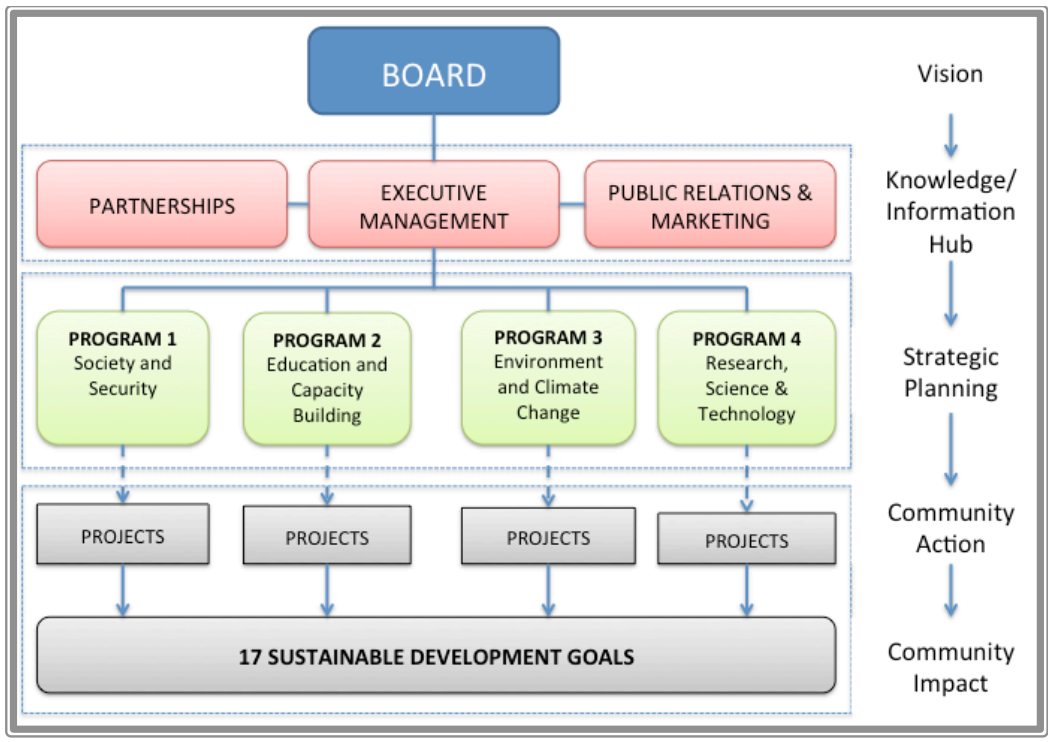
A Board governs the organization and provides advice on administrative and operational matters to the Executive Management for implementation. The Board's nomination is based on (a) diversity (b) commitment and (c) expertise.

Reporting to the Board is the Executive Management (EM) that is headed by a chairperson/director who is assisted by an executive management committee. The roles and responsibilities of the board include creation of enabling policies and plans, and conducting policy and program monitoring and evaluations. The executive management is also responsible for grant applications and management of the funds to ensure that expenditure is reconciled with program and/or project milestones.

The EM committee is further responsible for the creating partnerships and linkages with government, private sector and other non-government sector. TKP also envisions engaging/partnering with individual professionals in any field who would like to volunteer their time and expertise to make impact in the community. Where possible, TKP may choose to execute some of the programs or projects through its partners. Another critical responsibility of the EM Team is in building public relations and marketing of the organization, its goals and strategies to stakeholder and other interest groups.

Central to the roles of the EM committee is provision of strategic direction for its four core programs. The programs (1) Society and Security, (2) Education and Capacity Building, (3) Environment and (4) Research, Science and Technology reflect the society challenges currently faced in Bougainville and other parts of Papua New Guinea. Through these programs, TKP envisions to achieve the **UN Sustainable Development Goals**. The EM committee will be responsible for monitoring and evaluating implementation of the programs in partnership with the communities at our project sites.

Projects are carried out at the community level and are overseen by a Project Manager who provides project monitoring and evaluation reports and feedback to the EM committee for reporting back to our funding agencies so that accountability is maintained. The target groups that TKP partners/collaborate at the community level with for implementation of its programs are Community Governments and Village Authorities who are the legitimate governing agencies. As an organization, TKP will be managing funding and serve as a conduit for transfer of knowledge and technology appropriate for community consumption and consequently achieve our vision and fulfill our mission.



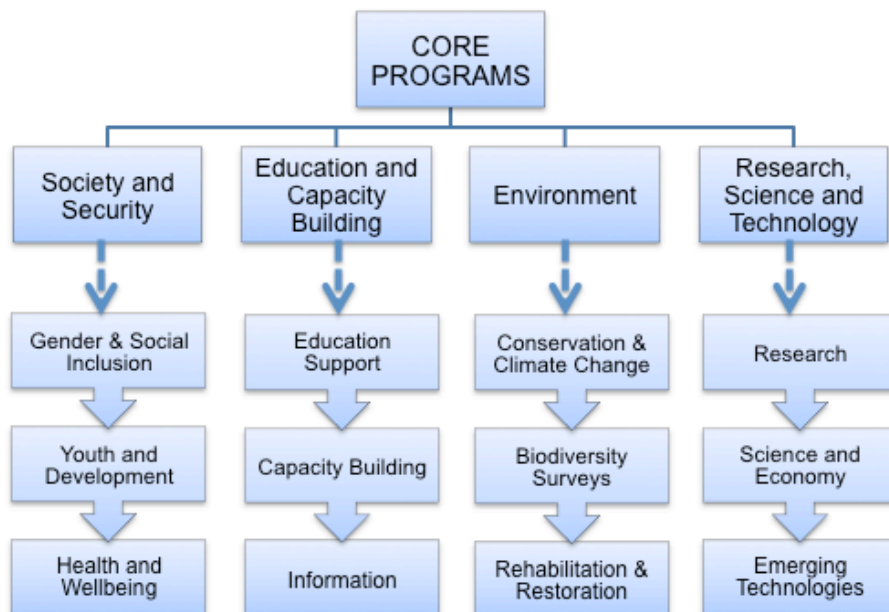
ORGANIZATIONAL FRAMEWORK

OUR PROGRAMS

The Kainake Project Inc. has four core programs on **(1) Society and Security**, **(2) Education and Capacity Building**, **(3) Environment** and **(4) Research, Science and Technology**.

One of the greatest challenges in Bougainville currently is the lack of knowledgeable and skilled human capital that is able to utilize the immense natural capital for long-term sustainable development. Programs 1 and 2 are people and society focused and are aimed at improving Human Development Index in the community in line with the PNG Vision 2050 aspirations. Our organization sees that investment in *social capital* is essential for Bougainville for peace and sustainable growth to occur. Programs 3 and 4 capture the human and society's interactions and interrelationship, which are crucial for its sustenance of life and wellbeing. The current states of challenges are multidimensional and therefore require multi-levels of approaches to ensure that we achieve growth within our ecological boundaries and resource constrains.

The logic of our development paradigm is that a just and sound society must be created whereby there is security (peace, understanding, wellbeing) and stability. This provides an environment for the young generation in particular to be nurtured through social, cultural and modern education systems to become responsible and knowledgeable (skilled) custodians for their community, resources and the environment. Through the application of knowledge and skills, communities are able to add value to their natural resources and promote long-term sustainable growth with perceived improvements to their quality of life.



Our core development program

1. SOCIETY AND SECURITY

PNG Vision 2050 states that PNG's future successes depends on the quality of its human capital. It is therefore important that we develop programs that will produce healthy and intelligent people of high ethical and moral character and attitudes. In line with the PNG government's vision at the national scale, our program focuses on how this can be implemented at the local level to achieve the desired outcome.

In this program, strategic importance is given to Gender Equity and Social Inclusion as the basis for a just and fair society. We value the important role women play in development through their economic and household work for the survival of their families, often through subsistence farming. Their household participation in development involves making decisions on healthcare, education and cultural matters, which ultimately impacts the community at large. We understand that women can contribute more towards community development if they are empowered through participation and are more involved in the decision making processes in the community. Persons living with disabilities, HIV infected people and other marginalized segments of the population are equally important for society and development and must participate as equal members of the community in all aspects of development including taking leadership and management roles.

Building a new generation of change champions is largely dependent on integral human development especially at an early age. Our organization supports the development of social, mental, physical, spiritual and financial capacities in its citizens by providing avenues like sports, education, church activities, and economic engagement. It is imperative that members of our community, especially children and youth, are nurtured in a loving and caring environment where opportunities for balanced growth and self-expression are available.

Health and wellbeing are important for the community to be happy and prosperous. Improvements in village cleanliness, proper sanitation, safe drinking water, nutrition, maternal health, mental health and clean air are key public health indicators we aim to achieve in partnership with the community.

SUSTAINABLE DEVELOPMENT GOALS TARGETED

- SDG 1: Reduce Poverty
- SDG 2: Zero Hunger
- SDG 3: Good Health and Wellbeing
- SDG 5: Gender Equality
- SDG 6: Clean water and sanitation
- SDG 7: Affordable and Clean Energy
- SDG 10: Reduce inequalities
- SDG 11: Sustainable communities
- SDG 16: Peace, justice and strengthen institution
- SDG 17: Partnerships for the Goals

2. EDUCATION AND CAPACITY BUILDING

Investment in human capital development results in socioeconomic development with experiences from OECD countries showing that a ten percent increase in expenditure in human development leads to an increase in output per capita between four and seven percent. We foresee that quality inputs into our education sector can greatly improve socioeconomic indicators in Bougainville.

We believe that quality education is everyone's business and every person has a fundamental human right to have access to education and information. While provision of education remains the function of the Autonomous Bougainville Government Department of Education, our organization provides support where appropriate and within our capacity. Some of our support programs may include mentorship programs involving national and international academics, scientists, researchers, artists, and entrepreneurs. This engagement and participatory learning will greatly benefit our students in developing interests in various fields and thereby creating their individual career and life pathways.

Building local capacity is essential for successful delivery of our programs. Local communities are blessed with immense traditional knowledge of their environment including resource management, subsistence farming, traditional medicine, birth control, and a host of other traditional knowledge products and services. Our organization believes in building leadership capacity in our communities so that citizens are able to identify local development challenges and collectively develop homegrown solutions that utilize their existing traditional knowledge systems or acquired knowledge for sustainable development.

In this 21st century, information is increasingly becoming a determinant for socioeconomic growth. We encourage the flow of information into our communities and advocate for access to data on any research outcomes that are essential to development.

SUSTAINABLE DEVELOPMENT GOALS TARGETED

- SDG 1: Reduce Poverty
- SDG 4: Quality Education
- SDG 5: Gender Equality
- SDG 8: Decent work and economic growth
- SDG 10: Reduce inequalities
- SDG 11: Sustainable communities
- SDG 16: Peace, justice and strengthen institution
- SDG 17: Partnerships for the Goals

3. ENVIRONMENT AND CLIMATE CHANGE

Bougainville is part of the East Melanesian Islands Hotspot that is known to be geographically complex and contains unique biodiversity found nowhere else in the world. Beginning in the early 1990s there has been a huge conservation drive among the Melanesian countries that has led to a number of success stories through the efforts of international environmental NGOs and community based conservation. Unfortunately, during this period when awareness and conservation action was gaining momentum in PNG, Bougainville was got up in a bloody civil war, and that effectively jeopardized any opportunity for conservation. In the absence of coordinated environment and conservation efforts, Bougainville is experiencing an increase in deforestation and unsustainable practices that are leading to loss of biodiversity and ecosystem services. A most recent problem is the uncontrolled use of mercury in alluvial gold mining on many of the important river systems around Bougainville that pose serious environmental and public health concerns.

Cognizant of these escalating concerns, our organization is driving community based (backyard) conservation efforts by working with the communities to develop their resource management plans through a process of consultation and dialogue. While our organization brings information and knowledge of the science and social impacts of biodiversity loss to generate understanding of the problems at the local and global scale, we are also mindful of the economic needs of the population and the implementations the environment provides them. Hence, our conservation strategy also requires identification of alternative livelihoods for the communities. Through community conservation efforts, we also raise global issues of climate change and how we can take local actions for mitigation.

To date, data about the extent of biodiversity on Bougainville is scanty. The civil war also prevented biodiversity surveys from being conducted and at this point, not much information is known about diversity of flora and fauna. Our organization is also interested in leading biodiversity surveys on Bougainville so that conservation plans can be developed to protect any endangered species that are endemic to the region. This may include the rehabilitation and restoration of habitats that harbor identified species.

SUSTAINABLE DEVELOPMENT GOALS TARGETED

- SDG 6: Clean water and sanitation
- SDG 10: Reduce inequalities
- SDG 11: Sustainable communities
- SDG 12: Responsible consumption and production
- SDG 13: Climate Action
- SDG 14: Life below water
- SDG 15: Life on land
- SDG 17: Partnerships for the Goals

4. RESEARCH, SCIENCE AND TECHNOLOGY

Science and Technology is vital for PNG to realize its aspirations expressed in its Vision 2050. In many of OECD countries, science and technology is perceived to increase economic growth and social progress. Research, science and technology have also contributed to development of new knowledge and innovation that is the hallmark for competitiveness in many developed and emerging nations.

Therefore our organization advocates and supports research (science or social science) that will add value to the understanding of our environment and its resources, and how best society can benefit from the sustainable use of its natural endowments.

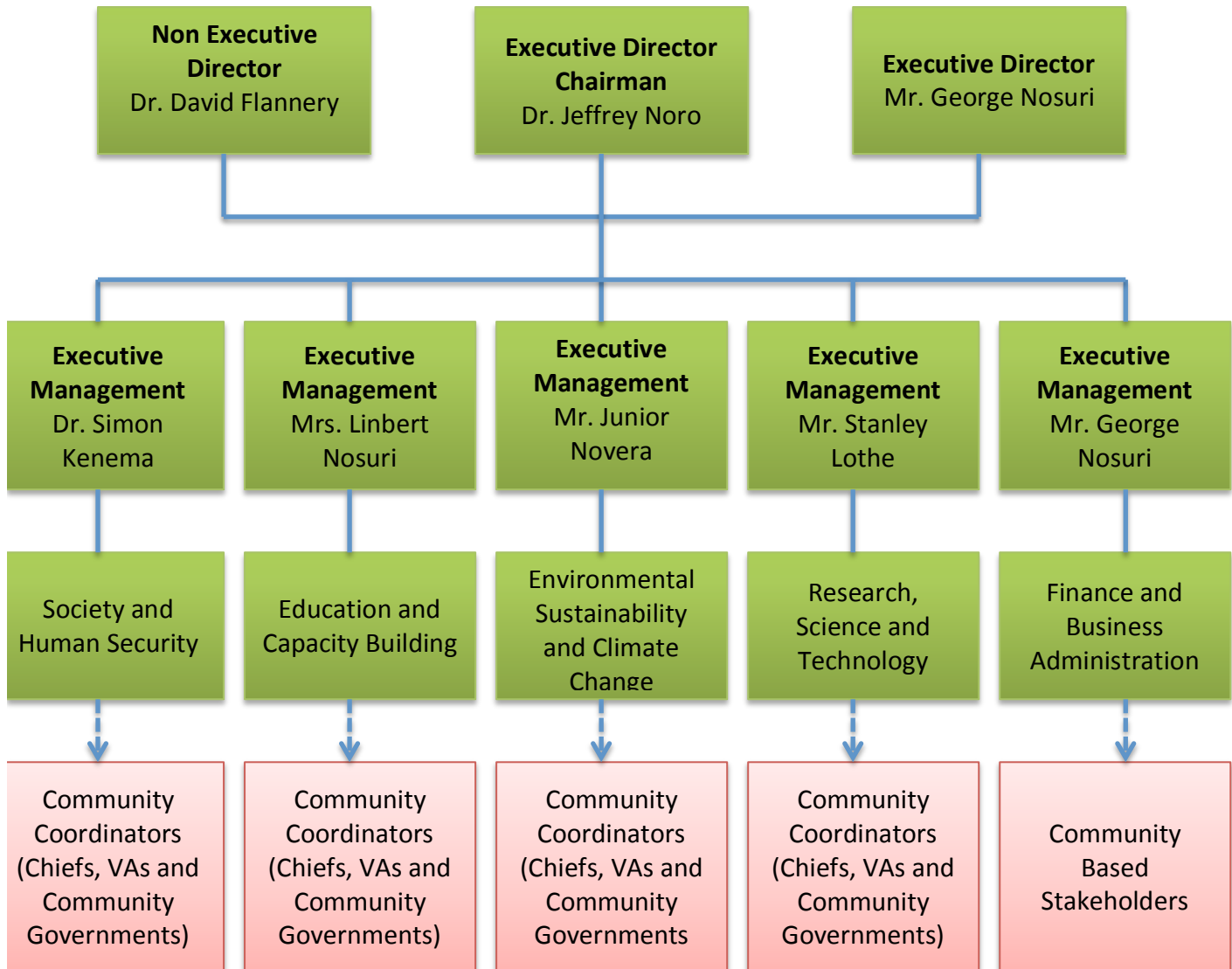
At this juncture it's important to note that the PNG Vision 2050 Pillar 2 focuses on "wealth creation" and objectifies employment of technology to enable downstream processing in agriculture, forestry, fisheries and tourism sectors. Hence our organization encourages the deployment of science and technology into improving and adding value to our commodities so that greater value is obtained while minimizing environmental carbon footprint. Connecting science to economy is critical for creating livelihoods

There are new technologies in renewable energy, ICT, biofilms, and a host of other environmentally friendly products that are emerging for public consumption. Our organization is interested in the adaptation of these technologies to integrate into its environment management system, processes and project applications.

SUSTAINABLE DEVELOPMENT GOALS TARGETED

- SDG 2: Zero Hunger
- SDG 3: Good Health and Wellbeing
- SDG 4: Quality Education
- SDG 5: Gender Equality
- SDG 6: Clean water and sanitation
- SDG 7: Affordable and Clean Energy
- SDG 8: Decent work and economic growth
- SDG 9: Industry, Innovation and Infrastructure
- SDG 10: Reduce inequalities
- SDG 11: Sustainable communities
- SDG 12: Responsible consumption and production
- SDG 16: Peace, justice and strengthen institution
- SDG 17: Partnerships for the Goals

OUR TEAM



BOARD OF DIRECTORS

DR JEFFREY NORO (EXECUTIVE DIRECTOR AND CHAIRMAN OF BOARD)



Jeffrey is a natural products scientist who is currently attached with the PNG Science and Technology Secretariat as the Policy Director. He has strong interest in biodiversity conservation and natural products discovery research. Over the last 10 years, he has been engaged with various drug discovery research groups including an *International Cooperative Biodiscovery Groups* program in PNG and in the United States. He was engaged as a Research Scientist with the School of Medicine and Health Sciences at the University of Papua New Guinea where he investigated PNG's traditional medicinal plants while pursuing his interest in marine microbial natural products. He is currently the Director for Policy for the PNG Science and Technology Council. Jeffrey is also the Chairman of the Executive Management.

DR DAVID FLANNERY (NON EXECUTIVE DIRECTOR)



David is an Australian scientist currently based at the NASA Jet Propulsion Laboratory in Pasadena, California, USA. He holds BSc, M.Phil and PhD degrees. He has a strong interest in regional development and in science education, and has worked on innovative ICT initiatives such as the virtual field trips produced by Arizona State University. David co-founded the Kainake Project with Jeffrey Noro. He works with Jeffrey to implement development programs on Bougainville Island.

MR GEORGE NOSURI (EXECUTIVE DIRECTOR)

George works as a Financial Controller for PNG Air Services; a government statutory body that control's PNG's airspace. He holds a Masters in Business Administration and a Bachelors Degree in Accounting from Divine Word University and the PNG University of Technology respectively. He is also a registered Chartered Public Accountant in PNG. George has more than 15 years of experience working in the private sector in PNG.

EXECUTIVE MANAGEMENT

MR JUNIOR NOVERA

Mr. Junior Novera is a conservation biologist with many years of experience working with PNG Institute of Biological Research and holds a Master's Degree in Conservation Biology from Lancaster University. He is undertaking his PhD studies at the University of Queensland, Australia in 2016 and his research will be conducted within the Kainake conservation site and other key biodiversity areas in Bougainville. He is involved in the planning of our environment and conservation program.

DR SIMON KENEMA

Dr. Simon Kenema is an anthropologist and holds a PhD from St. Andrews University in Scotland, United Kingdom. Dr. Kenema's interests include identity politics, environmental anthropology, and vernacular ideologies of change. He has conducted ethnographic research and awareness in Bougainville for his PhD thesis. He brings immense experience into the project. He is the program leader in Society and Security.

MR STANLEY LOTHE

Mr. Stanley Lothe has Bachelor of Science Degree with Honors in Biological Chemistry from the University of Papua New Guinea and recently submitted a research thesis to the UPNG School of Medicine and Health Sciences for a Masters in Medical Sciences. He currently runs a small business in Port Moresby and Bougainville. His business interest is critical in developing supply and value chain of commodities under our sustainable livelihood projects.

MRS LINBERT NOSURI

Mrs Linbert Nosuri has Bachelors in Education, which she obtained from the Pacific Adventist University. She then taught in a number of secondary schools for about 5 years before she enrolled at the University of Papua New Guinea where she completed a Bachelors Degree with Honors in Geography and Demography. She has held senior positions with the International Office of Migration and currently working with Child Fund. She volunteers with TKP as our secretary and program leader in our Education and Capacity Building program.

CURRENT PROJECTS

1. Kainake Community Conservation and Research Park

55 hectares of virgin lowland tropical rainforest was proclaimed as a community conservation area in December 2015. A local Conservation Management Committee was established.

2. Kainake Elementary School

The elementary school was established in 2014. The school caters for Kindergarten, Preschool, Elementary 1 and 2.

3. Vanilla Farming Pilot Project

A community at our pilot project site is piloting a vanilla project to produce organic vanilla for export. We are targeting the Fair Trade and other niche markets through our networks.

PARTNERSHIPS

1. Australian Museum

In April 2016, TKP entered into an agreement with the Australian Museum for the research and conservation of the endangered giant tree rat, *Solomys ponceleti*, and the monkey-faced bats "*Pterolopex* sp.", which are endemic to the Solomon archipelago.

Link: <http://australianmuseum.net.au/blogpost/amri-news/australian-museum-expeditions-giant-rats-and-monkey-faced-bats-of-the-solomon-islands-archipelago>

2. International Union of Conservation of Nature

In May 2016, TKP received an Institutional Capacity Building Grant for the organization to build its management system. Under this funding the organization is developing its Strategic and Corporate plans, Governance and Ethics Policy, Financial Management Guideline and Procedures, Monitoring and Evaluation Framework and to develop its governing and strategic structures.

3. United Nations Development Program-Global Environment Facility

In December 2015, TKP was awarded a planning grant by the Global Environment Facility facilitated through UNDP's Small Grants Program to undertake community consultation in the pilot community. There is ongoing support from UNDP-GEF.

LEGAL REGISTRATION

THE KAINAKE PROJECT Inc. has been registered as an association under the Associations Act with the PNG Investment Promotion Authority on the 7th November 2014. Association Number is **5-100505**